

An insight of Boho style Interior Design

¹Ananya Mishra ²Ar. Prashant Singh (Assistant Professor, CSJM University, Kanpur)

Abstract

The Bohemian style is always trending in interior design. It tops up a sophisticated look into your space while giving an extensive and cheerful environment. Boho style is infused with organic elements encouraging maximalism in designing a space. People love the mood of the Bohemian décor, and it will never go out of trend. It has been persistent interior theme since the 19th century and has seen great rise in admiration in recent years. It spruces up any space inspiring new vibes with unique and colorful blend of aesthetic elements.

In this report, we will make you explore the amazing Boho style interior which fills your volume with warmth and coziness. People will get an insight of how they can achieve a buoyant look in their homes.

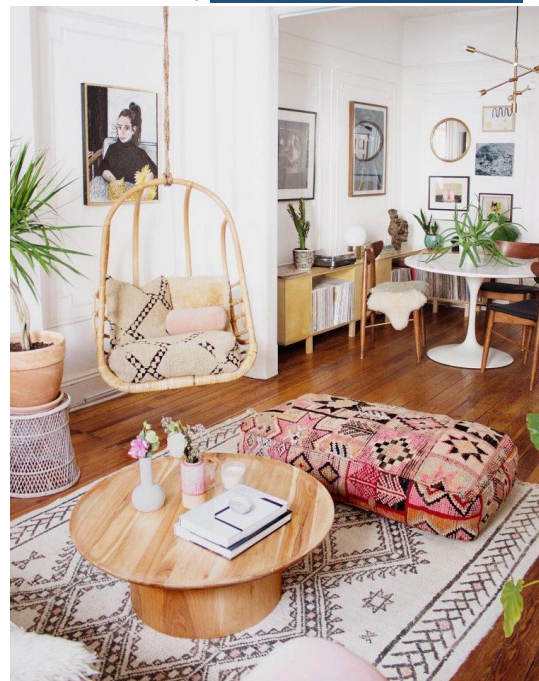
1. Introduction

The Boho look has almost always been trending in interior design. The term 'Boho' refers to the unorthodox and creative way of designing. The use of organic patterns,



textures and materials makes it peculiar and operational theme. It blends vintage elements with modern tincture for unique designs.

The Bohemian design originated in the 19th century Paris when the artists rejected the lifestyle of French business class and created new areas which emphasized on creative eloquence rather than wealth and reputation. They felt that creativity is more important than money and adopted the thought of living life to the fullest.



Boho style is a fusion of cultural influence and global style. It exhibits one's taste of design and style. There are no rules for designing a Boho theme which makes it innovative and unique in every case. You can play with your own creativity and experiment with different elements (Golding, 2020).

2. Elements of boho design

The Boho style uses layering of different colors, patterns, furniture's, and other elements. Boho design gives out attractive imagination that irradiates a space differently.

Here are the various elements of Bohemian design which can be incorporated in a design to achieve a Boho look.

A. Vibrant colors

Boho décor includes using bold colors which add vibrancy to cheerfulness to the space. Take a neutral base which makes a perfect earthy tone canvas. You can give a bit of green, pink, red, blue, orange. Accent pattern can also add up to the Boho look of your space (Obrzud, 2020). Pick a pattern of popping colors which will add to the eccentricity.

The current trending color theme of Boho design is more of neutral-earthy tones which are nature oriented. Pastels, muted tones and

rich colors are best suited for a cozy environment.

B. Furniture

The more your furniture is closer to the floor the more sterling your Boho design will be, go with light colored wood furniture (Bohemian design style: What it means and



how to get the look, 2020).

You can have vintage furniture's that will give your space more personality. Choose relaxing pieces like daybeds or butterfly chairs (Flanagan, 2020). Give loads of upholstery to the furniture.

C. Lighting



Ambient lighting completes the Boho look of your space and will provide warmth and calmness. Use string lights, chandeliers, candles, lanterns, floor and table lamps. Natural fiber pendants and hand-woven light

would fit fancy on



adding sophistication to your interior. The Bohemian lights give a class of illumination that gives your time a laidback Boho vibe (Flanagan, 2020).

D. Landscaping

Bohemian interior is incomplete without plants. They integrate ideally with the Bohemian interior and give a natural vibe. They can be hanging pots, vines or large and small plants (Boho home decor, 2019).. They enhance the luxurious feeling of your space while inspiring a laid-back mood. They add accent to the design.

E. Textures and patterns

Most Boho interiors are constructed around textures and patterns, which can be used in many ways. Layering is the best way to add these elements in your design. You can mix patterns with solid colors to create balance in your space. They add a decent character and charm to any space.

F. Accessories



Make a big statement by using vintage and extraordinary artistic pieces which will cheer up and lighten the space and deliver it a character. You can add canopy over beds and bold accessories.

Giving tassels on various pieces and scented candles or fragrances provides a perfect Bohemian vibe. You can hang paintings which will lighten the energy of your space.

Conclusion



At the end, by choosing the best combination of all the elements you will achieve a perfect Boho look for your space, complimenting your persona. It is completely one's way of composing all the pieces and designing a bold and eclectic environment.

So, if you want a theme which inhibits warmth and cheerfulness into your space, you can plan to go with Bohemian theme. It welcomes uniqueness and inspires peculiarity and diversity. The use of natural elements in Boho design adds an organic feel to the space and the vintage pieces give a character and depth.

References

- Bohemian design style: What it means and how to get the look.* (2020). Retrieved from DECORAID:
<https://www.decoraid.com/blog/interior-design-style/bohemian-style-interior-design/>
- Boho home decor.* (2019). Retrieved from Studocu: <https://www.studocu.com/en-gb/document/holy-cross-college-uk/content-writing/boho-home-decor-basic-content-writing/33055789>
- Ćurčić, A. (2019). Effects of color in interior design. *Research Gate*.

- Flanagan, L. (2020, may 25). *How to nail Bohemian style in your home*. Retrieved from THE SPRUCE:
<https://www.thespruce.com/decorators-guide-to-bohemian-style-1977570>
- Golding, S. (2020, MARCH 22). *What is Bohemian interior design?* Retrieved from LIVING COZY:
<https://www.livingcozy.com/blog/bohemian-interior-design>
- Impact And Importance Of Colour In Interior Design.* (2019, february 12). Retrieved from colour your blank space:
<https://cubspaces.com/impact-and-importance-of-colour-in-interior-design/>
- Obrzud, K. (2020, JULY 14). *Design style defined: your guide to Bohemian interior*. Retrieved from HOGAN DESIGN AND CONSTRUCTION:
<https://www.hogandesignandconstruction.com/blog/design-styles-defined-your-guide-to-bohemian-interiors>
- Paul, H. (2020). The power of colour. *The Psychology of Colors in Interior Design.* (n.d.). Retrieved from Foyr:
<https://foyr.com/learn/psychology-of-colors-in-interior-design/>